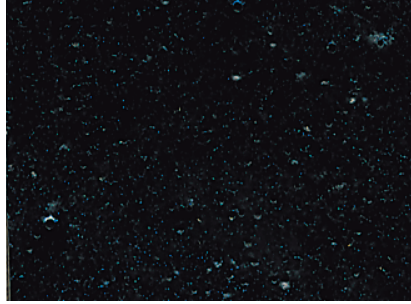
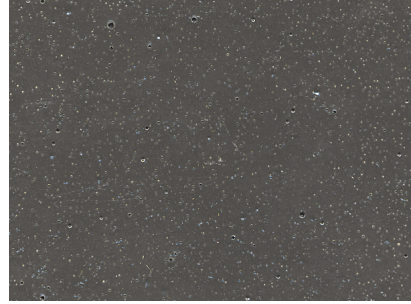




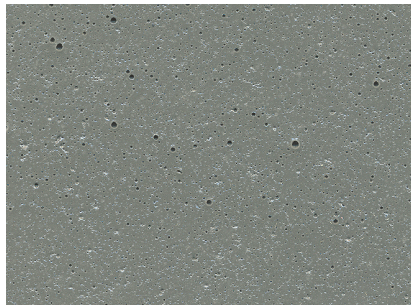
General Polymers FasTop™



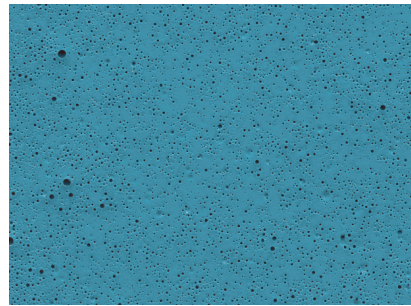
Black



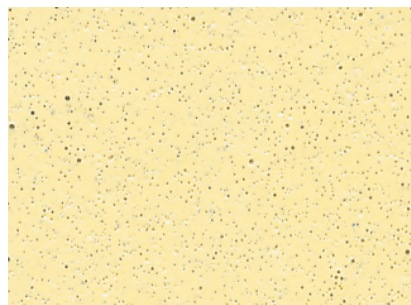
Dark Gray



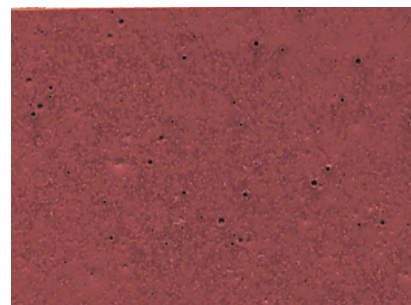
Light Gray



Blue



Neutral



Red

Also available in White — FasTop™ Slurry System is not to be applied as a smooth surfacing system. The FasTop™ Slurry System must receive a full broadcast aggregate application. This reproduction approximates the actual color. Factors such as the type of product, degree of gloss, texture, size and shape of area, lighting, heat or method of application may cause color variance. Contact your Sherwin-Williams representative for details.



FasTop[™] Flooring System

FasTop flooring systems are designed for fast installation, quick return to service and long-lasting performance. FasTop's state-of-the-art formula allows it to cure rapidly with excellent chemical resistance and is moisture-tolerant during and after installation. Whether you have new concrete, deteriorated acid brick or concrete that's simply worn out, our certified contractors can prepare the substrate and install a new seamless FasTop system that will improve the safety, productivity and functionality of your facility.

- FasTop combines water-based urethane resins with cement and unique aggregates to form a Fast-track, durable flooring system designed for the toughest environments.
- FasTop color is derived from unique aggregate, but can be top-coated with many resins to achieve standard or custom colors. Standard color samples are available through Sherwin-Williams within five business days. Please allow two weeks for custom colors or modified system samples.
- Project samples depicting color, texture and gloss should be provided by a flooring contractor prior to installation.

At Sherwin-Williams, we're recognized nationwide for our outstanding customer service and support. Our flooring experts will work with you to help you meet requirements, answer your questions and recommend the best product solutions to you. In addition, our technical field reps are knowledgeable in local and federal environmental regulations, ASTM standards and trade association recommended practices. Our reps are backed by a team of Corrosion Specification Specialists accredited by NACE international. We also have a select team of highly skilled local installers. So you can be sure that from start to finish, Sherwin-Williams will help you get the job done right.

To learn more, visit us at www.sherwin-williams.com/protective or call 1-800-524-5979 to have a representative contact you.